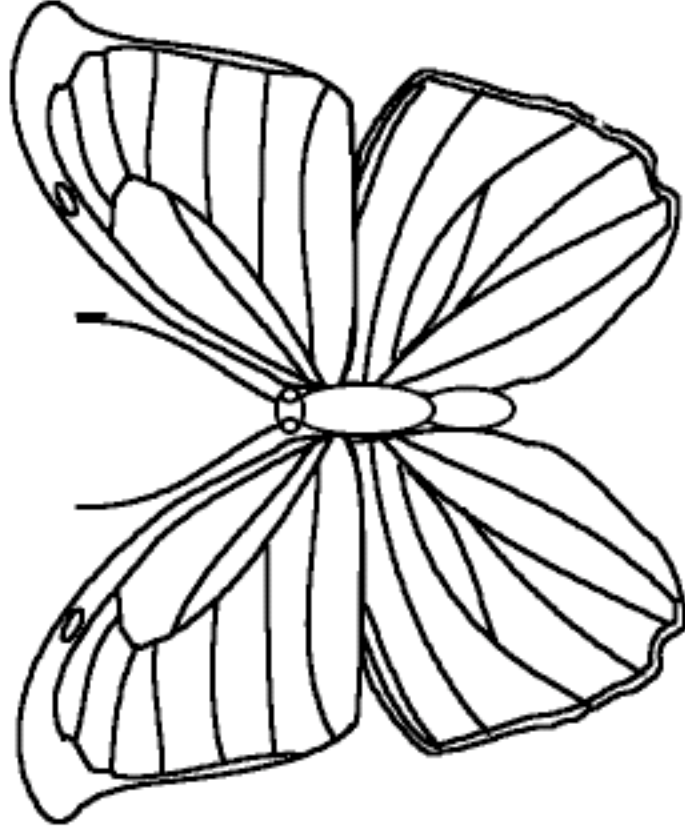
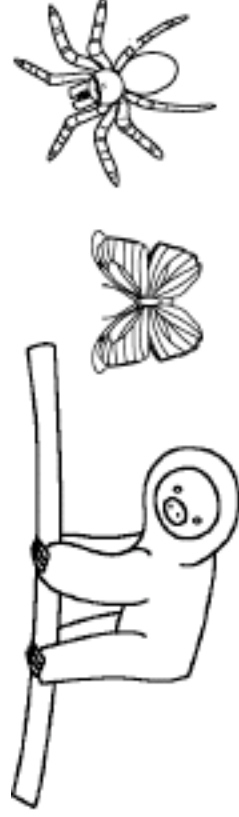


Rain Forest Animals



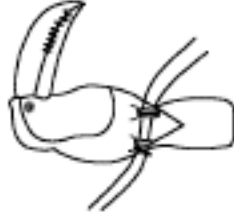
The morpho is a
bright blue
butterfly.

©EnchantedLearning.com



Rain

Forest Animals

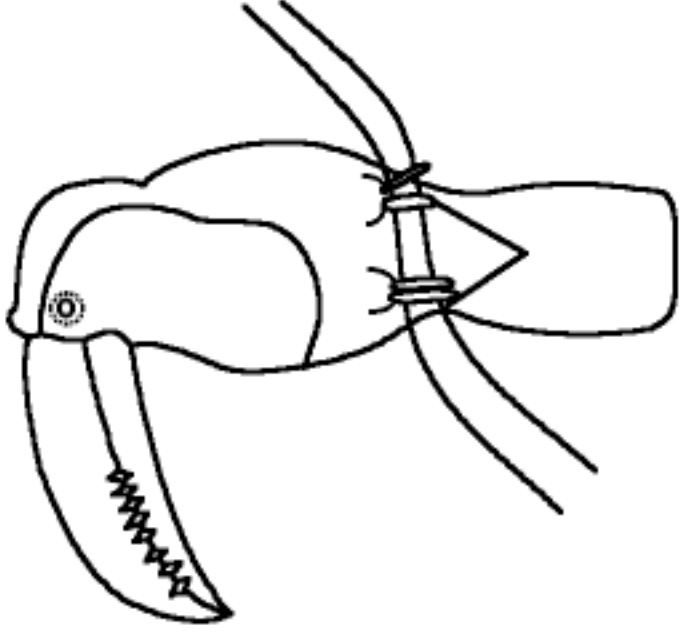


By _____



©EnchantedLearning.com

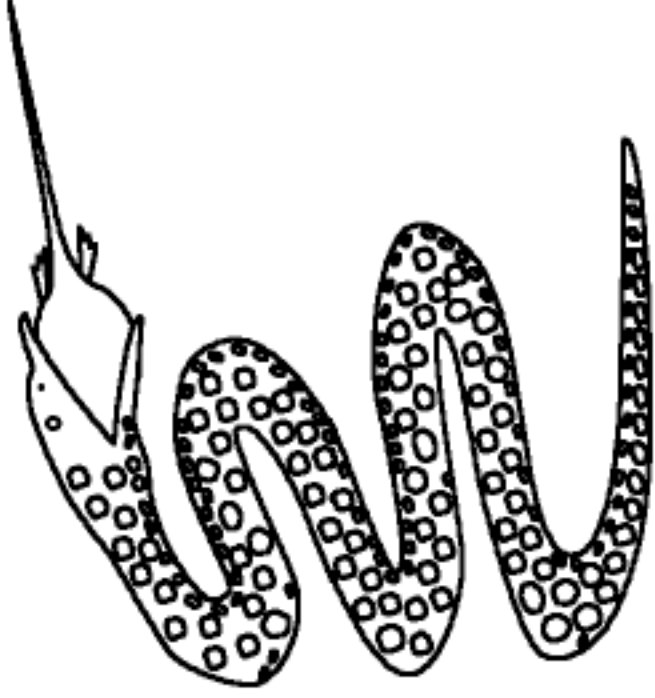
Rain Forest Animals



The toucan is a
bir__ with a
__ig bill.

©EnchantedLearning.com

Rain Forest Animals



The anaconda is a
lar__e, constricting
sna__e.

©EnchantedLearning.com

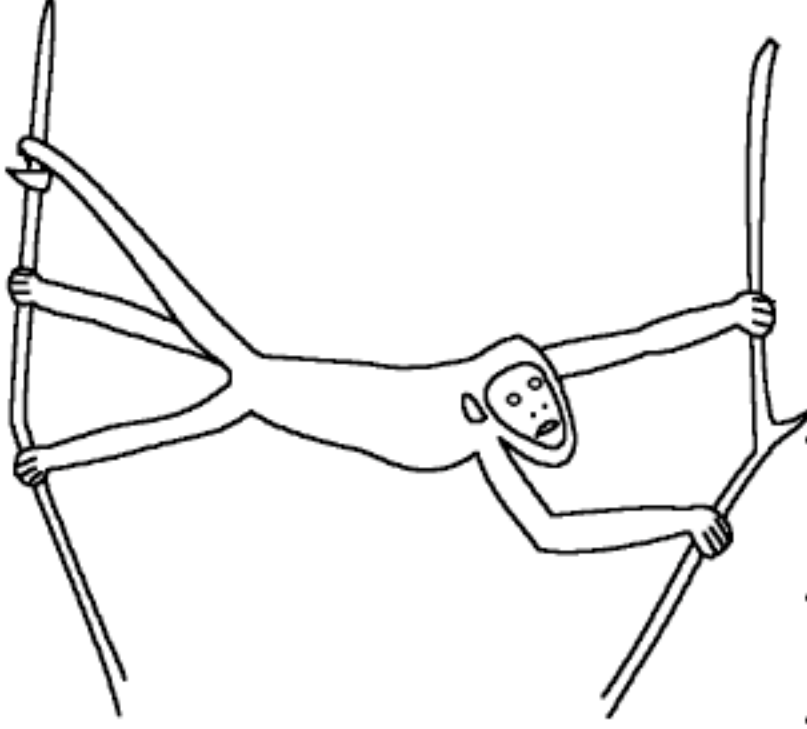
Rain Forest Animals



The sloth is a
__low-moving
ma__mal

©EnchantedLearning.com

Rain Forest Animals



The howler monkey
is the loude__t
land __nimal.

©EnchantedLearning.com

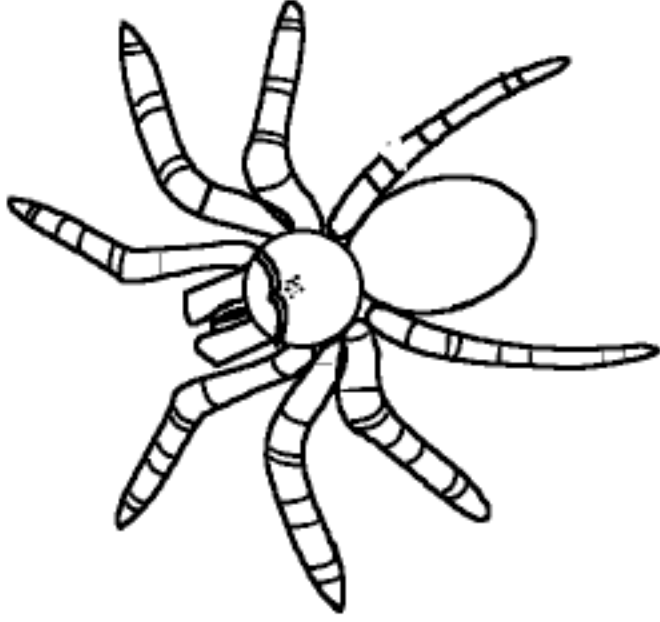
Rain Forest Animals



The kinkajou is a
long-tailed mammal
that li es in
 rees.

©EnchantedLearning.com

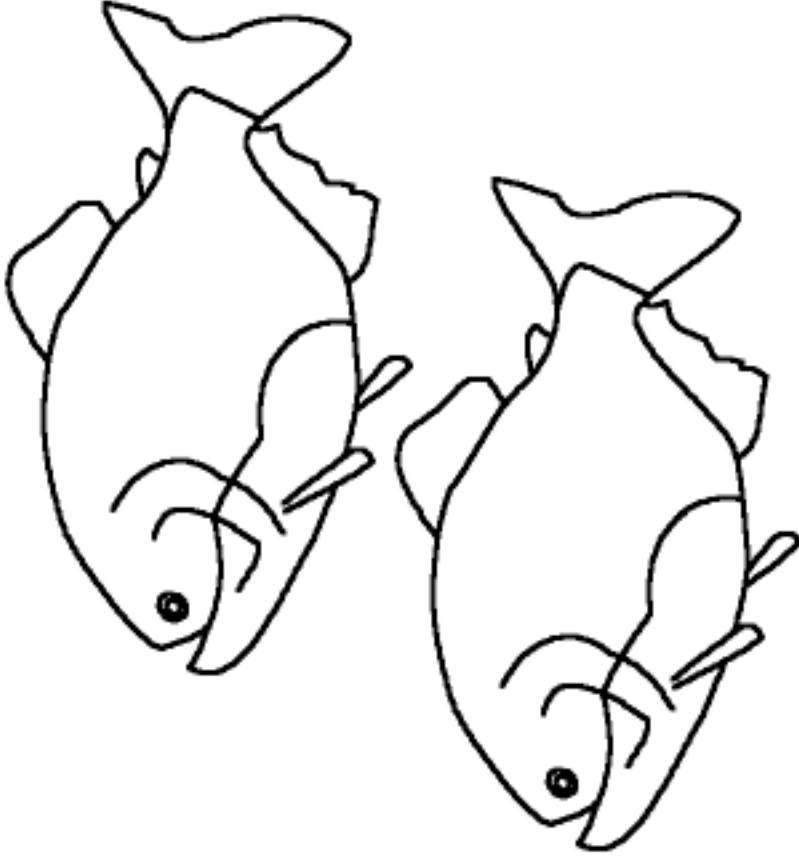
Rain Forest Animals



The tarantula is a
lar e, hairy
s ider.

©EnchantedLearning.com

Rain Forest Animals



The piranha is a
___eat-eating
___ish.

Rain Forest Animals



The capybara is the
world's ___iggest
ro___ent.

Rain Forest Animals



The poison arrow
frog has
_____oisonous
_____kin.

©EnchantedLearning.com

Rain Forest Animals



The giant anteater
catches an___s
with its long
ton___ue.

©EnchantedLearning.com